



ROAD KING 2UP LUGGAGE RACK INSTALLATION GUIDE

Thanks for choosing Motherwell Products! Here at Motherwell Products we take great pride in our workmanship, and guarantee your satisfaction with the quality of our products.

Please Note: This luggage rack will work with Harley backrests p/n 52805-97B, 52723-06 & 52933-97B. (Will not work with p/n 52935-04)

STEP ONE

Remove the backrest from the bike

STEP TWO

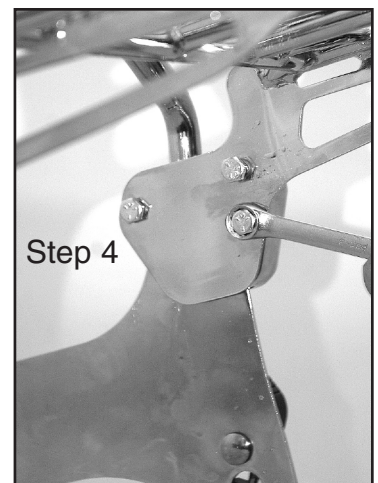
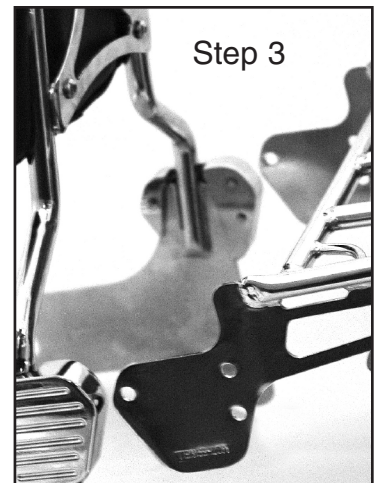
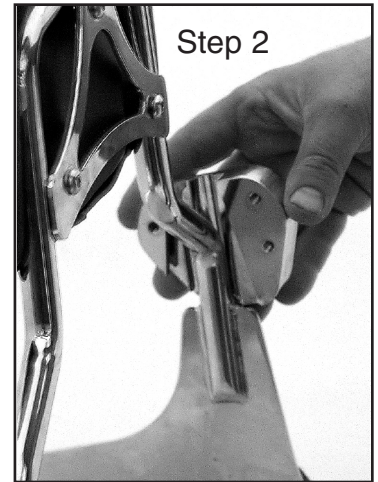
Slide the mounting blocks on to the side plates with the machined lines facing the outside. The side with the single drill and tapped hole is the forward side. **(Please note:** Do not force blocks on, they will slide down easily into place)

STEP THREE

Once the mounting blocks are installed, slide the luggage rack between the blocks and apply all hardware loosely. Apply medium loctite (242 blue) on all bolts prior to installation

STEP FOUR

Once all hardware is installed, tighten down the bolts to 60 inch pounds or 5 ft pounds do not over tighten or you will strip the mounting blocks. Reinstal back rest onto bike.



WARNING

Improper installation could result in damage to the luggage rack, personal property and or cause personal injury. There is a 10lb maximum carrying capacity. Going over the maximum capacity may cause handling difficulty.

Parts List:

- 1 - Luggage Rack - Part # MWL 475
- 2 - Mounting Blocks; Part # MWL-475-RIGHT & MWL-475-LEFT
- 6 - Mounting bolts